

CAMERONS STIFF & Co.

Inc. QUEENS PARK PARTNERSHIP



Milman Road, Queens Park, NW6

Camerons Stiff & Co. are delighted to offer this attractive family house in an enviable position overlooking the west side of Queens Park. The property has been beautifully refurbished with a modern open plan kitchen opening onto a south west facing garden with lawn and a fabulous decked entertaining space.

This stunning family home comprises four spacious bedrooms. The master bedroom benefits from built in wardrobes and a contemporary en-suite shower-room. The loft has been converted to create the fourth bedroom complete with en-suite. There are an additional two bedrooms plus a family bathroom with underfloor heating.

Great location close Queens Park & Salusbury Road.

- Beautifully refurbished Edwardian family home
- Spacious accommodation spanning 2153 sq ft
- Large bay windows with window shutters fitted
- 4 bedrooms, 3 bathrooms (2 en-suite)
- Open plan kitchen/family area onto garden
- Stunning terrace onto south west facing 39 ft garden
- Ground Floor underfloor heating & Megaflow boiler
- Good storage space, fitted wardrobes
- Overlooking Queens Park
- Excellent transport links & Good schools

£2,250,000 Freehold

www.cameronsstiff.co.uk

CAMERONS STIFF & Co.

Inc. QUEENS PARK PARTNERSHIP



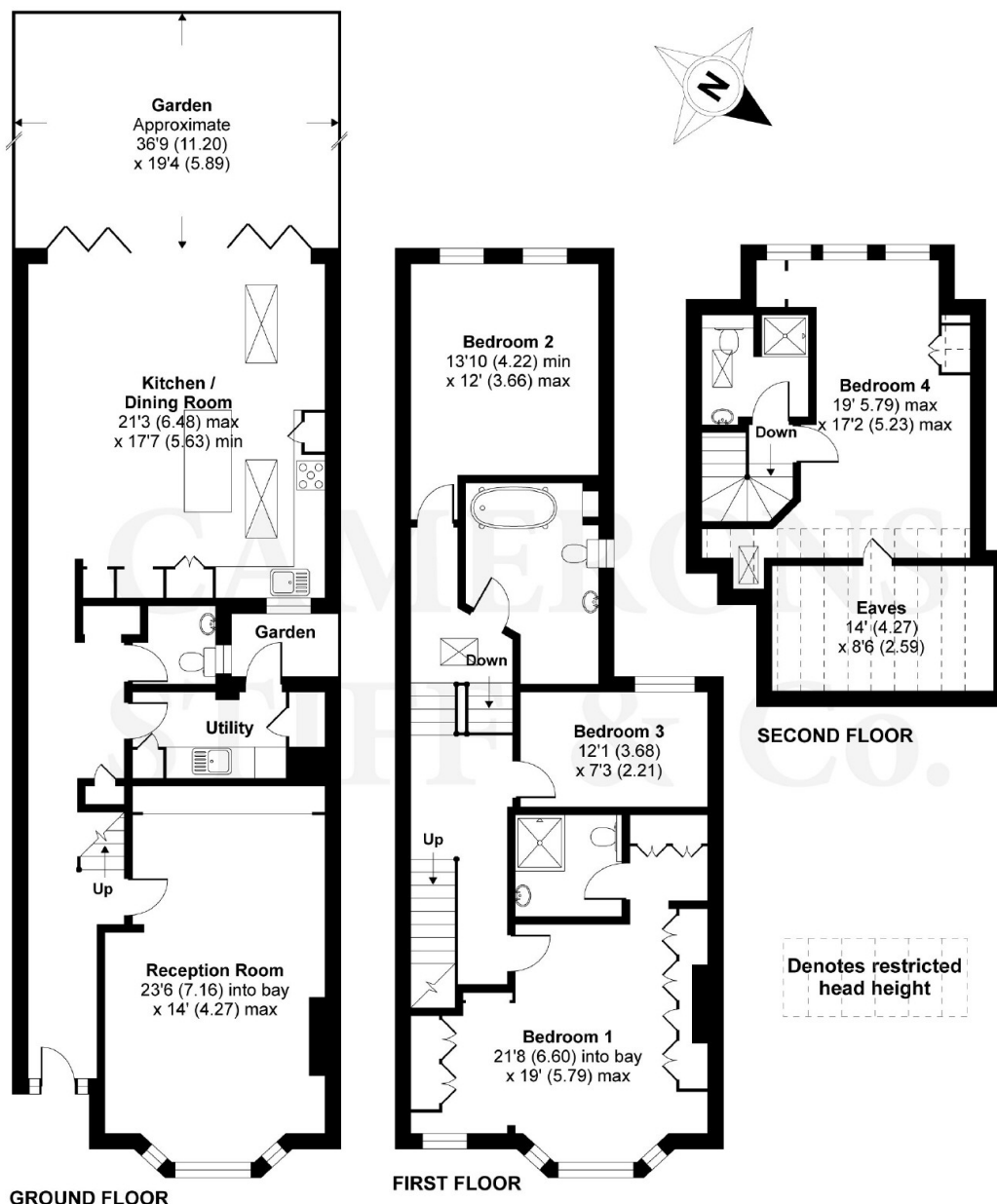
www.cameronsstiff.co.uk

You may download, store and use the material for your own personal use and research. You may not republish, retransmit, redistribute or otherwise make the material available to any party or make the same available on any website, online service or bulletin board of your own or of any other party or make the same available in hard copy or in any other media without the website owner's express prior written consent. The website owner's copyright must remain on all reproductions of material taken from this website.

Energy Efficiency Rating		Current	Potential
Very energy efficient - lower running costs	A		
(92-100)	B		
(81-91)	C		
(69-80)	D	62	65
(55-68)	E		
(39-54)	F		
(13-38)	G		
Not energy efficient - higher running costs			
England & Wales		EU Directive 2002/91/EC	

Milman Road, London, NW6

APPROX. GROSS INTERNAL FLOOR AREA 2153 SQ FT 200 SQ METRES (EXCLUDES RESTRICTED HEAD HEIGHT)



Whilst every attempt has been made to ensure the accuracy of the floor plan contained here, measurements of doors, windows and rooms are approximate and no responsibility is taken for any error, omission or misstatement. These plans are for representation purposes only as defined by RICS Code of Measuring Practice and should be used as such by any prospective purchaser. Specifically no guarantee is given on the total square footage of the property if quoted on this plan. Any figure given is for initial guidance only and should not be relied on as a basis of valuation.

Copyright nichecom.co.uk 2017 Produced for Camerons Stiff & Co REF : 188274

www.cameronsstiff.co.uk

275 Willesden Lane, London NW2 5JA T: 020 8459 1133 E: enquiries@cameronsstiff.co.uk

62 Salusbury Road, London, NW6 6NS T: 020 7328 2828