

CAMERONS STIFF & Co.

Inc. QUEENS PARK PARTNERSHIP



Dartmouth Road, NW2

AVAILABLE NOW - We are delighted to offer TO LET this very spacious flat situated within the Mapesbury Conservation Area and offered partly furnished.

This beautifully presented apartment benefits from three spacious bedrooms, one bathroom, separate WC, bright living room, fully fitted kitchen, private balcony and use of the communal gardens. There is also a bedroom on the ground floor, which can be used as a study room or store.

Excellent location on one of the area's best roads, just a short walk from Willesden Green Jubilee Line Station (Zone 2).

- Available NOW
- Offered part furnished
- 3 spacious bedrooms, 1 bathroom
- Bright reception room
- Private balcony
- Use of the communal gardens
- Excellent location
- Close to Willesden Green Station
- Viewing is highly recommended

Admin fee: £180 inclusive of VAT - Reference Fee: £45 inclusive of VAT per applicant - Inventory Fee may also apply

£525 Per Week

www.cameronsstiff.co.uk

CAMERONS STIFF & Co.

Inc. QUEENS PARK PARTNERSHIP



www.cameronsstiff.co.uk

You may download, store and use the material for your own personal use and research. You may not republish, retransmit, redistribute or otherwise make the material available to any party or make the same available on any website, online service or bulletin board of your own or of any other party or make the same available in hard copy or in any other media without the website owner's express prior written consent. The website owner's copyright must remain on all reproductions of material taken from this website.

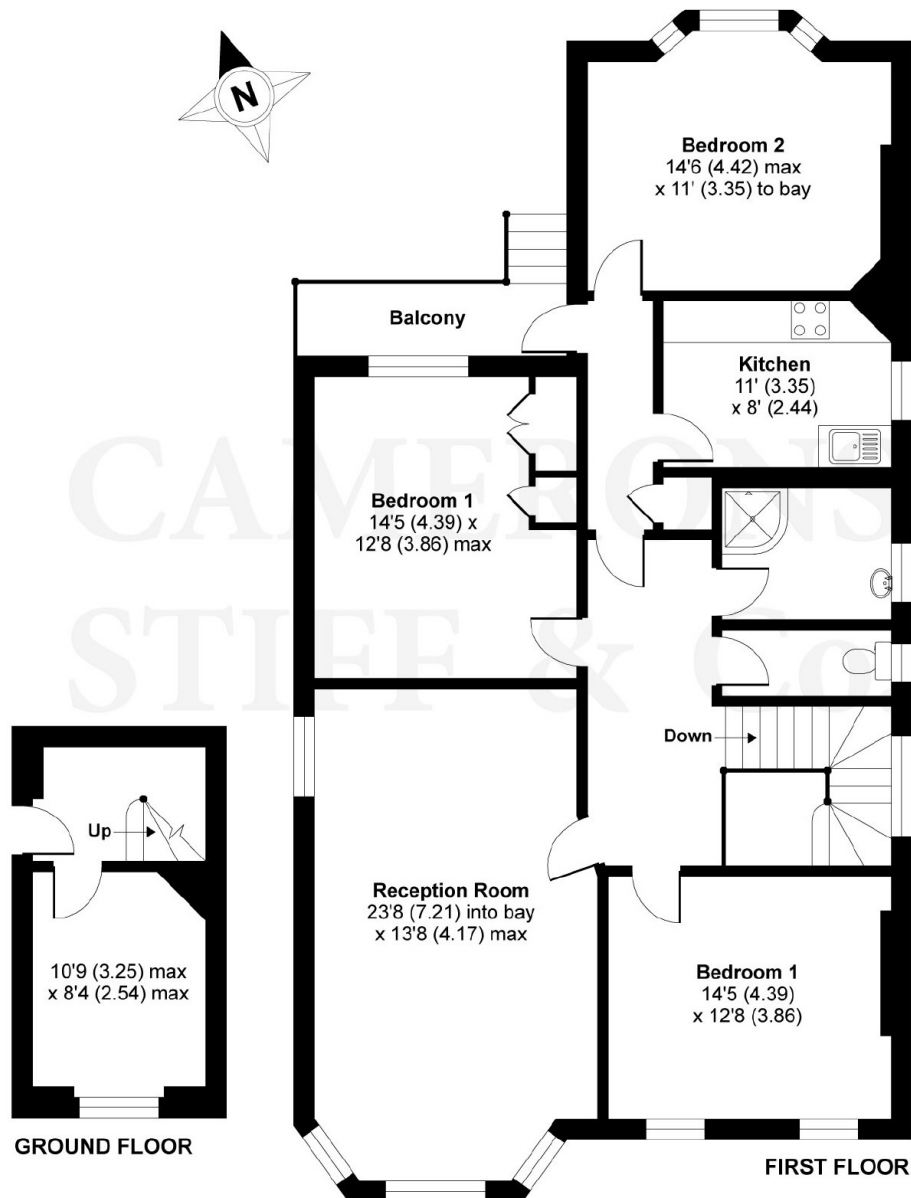
CAMERONS STIFF & Co.

Inc. QUEENS PARK PARTNERSHIP

Energy Efficiency Rating		Current	Potential
102-100	A		
92-101	B		
82-91	C		77
72-81	D		
62-71	E	44	
52-61	F		
42-51	G		
Not energy efficient - higher running costs			
England & Wales		EU Directive 2002/91/EC	

Dartmouth Road, London, NW2

APPROX. GROSS INTERNAL FLOOR AREA 1401 SQ FT 130.1 SQ METRES



Whilst every attempt has been made to ensure the accuracy of the floor plan contained here, measurements of doors, windows and rooms are approximate and no responsibility is taken for any error, omission or misstatement. These plans are for representation purposes only as defined by RICS Code of Measuring Practice and should be used as such by any prospective purchaser. Specifically no guarantee is given on the total square footage of the property if quoted on this plan. Any figure given is for initial guidance only and should not be relied on as a basis of valuation.

Copyright nichecom.co.uk 2018 Produced for Camerons Stiff & Co REF : 388080

Admin fee: £150 +vat - Reference Fee: £30 +vat per application - Inventory Fee may also apply

2 Willesden Green Station, Walm Lane, London NW2 4QS T: 020 8450 9377 E: lettings@cameronsstiff.co.uk

62 Salusbury Road, London, NW6 6NS T: 020 7328 2828

