

CAMERONS STIFF & Co.

Inc. QUEENS PARK PARTNERSHIP



Esmond Road, NW6

We are delighted to offer to the market place this stunning four bedroom family home situated on a quiet residential street in Queens Park.

The property is arranged over 1648 sq ft and comprises four double bedrooms, a double reception room leading on to a modern fully equipped eat in kitchen followed by the private garden.

Having had the side return and the loft converted this is an ideal family home in a great location just a short walk to the local bars and restaurant and transport links. The finish of this property is top end and will appeal to all so we recommend you book your viewing early, this is one NOT to miss as priced to sell.

- OFFERED CHAIN FREE
- Stunning family home
- Spanning 1648 sq ft
- 4 double bedrooms
- Modern finish
- Wooden flooring on GF
- 31 ft rear garden
- Close to Queens Park
- Excellent transport links
- Must be seen

£1,400,000 Freehold

www.cameronsstiff.co.uk

CAMERONS STIFF & Co.

Inc. QUEENS PARK PARTNERSHIP



www.cameronsstiff.co.uk

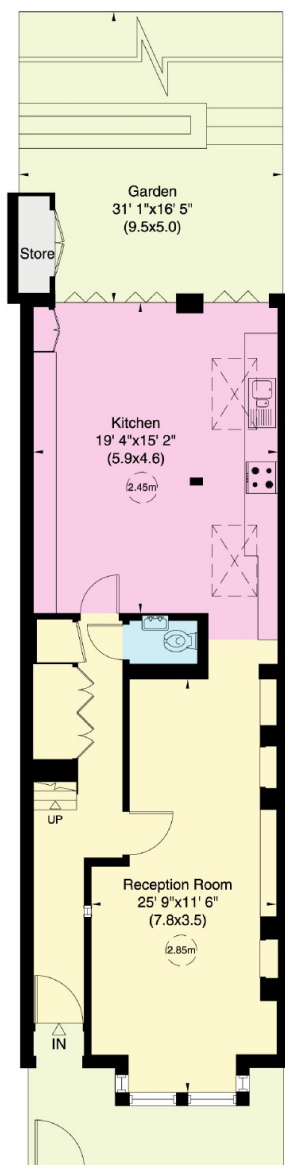
You may download, store and use the material for your own personal use and research. You may not republish, retransmit, redistribute or otherwise make the material available to any party or make the same available on any website, online service or bulletin board of your own or of any other party or make the same available in hard copy or in any other media without the website owner's express prior written consent. The website owner's copyright must remain on all reproductions of material taken from this website.

Energy Efficiency Rating		
Energy efficient - lower running costs	Current	Potential
92-100 A		
81-91 B		
69-80 C		77
55-68 D	59	
39-54 E		
21-38 F		
1-20 G		
Not energy efficient - higher running costs		
England & Wales		EU Directive 2002/91/EC

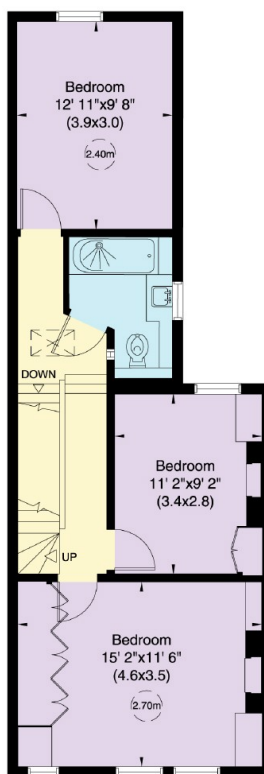
Esmond Road, NW6

Gross internal area (approx.)
 153 Sq m (1648 Sq ft) Including Under 1.5m
 141 Sq m (1522 Sq ft) Excluding Under 1.5m

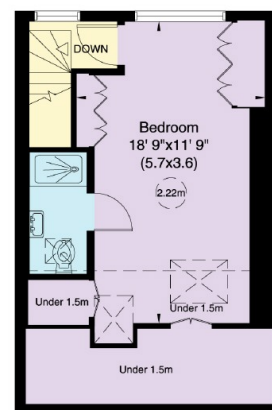
For identification only, Not to Scale



Ground Floor



First Floor



Second Floor

Not to scale, for guidance only and must not be relied upon as a statement of fact. All measurements and areas are approximate only (and have been prepared in accordance with the current edition of the RICS Code of Measuring Practice).