



Peter Avenue, NW10

OFFERED CHAIN FREE - a unique opportunity to acquire this 5 bedroom double fronted end of terrace situated on Peter Avenue requiring full modernisation throughout.

The house benefits from off street parking and an external garage to be accessed via Harlesden Road. It also has access to a large loft creating fantastic development potential to create flats or a sizable family home, subject to usually planning consents.

Situated on this popular road nestled behind Willesden High Road offering many local amenities including shops and restaurants on the High road and gym facilities on Donnington Sports ground. Transport links include Jubilee line underground and many bus routes.

- 5 bedrooms property, spanning 1405 sq ft
- Opportunity to refurbish to own taste
- Large loft with potential to extend (stpp)
- 28ft rear courtyard
- Off street parking
- Close to local amenities
- Jubilee Line station close by
- Viewing is highly recommended

£825,000 Freehold

www.cameronsstiff.co.uk

CAMERONS STIFF & Co.



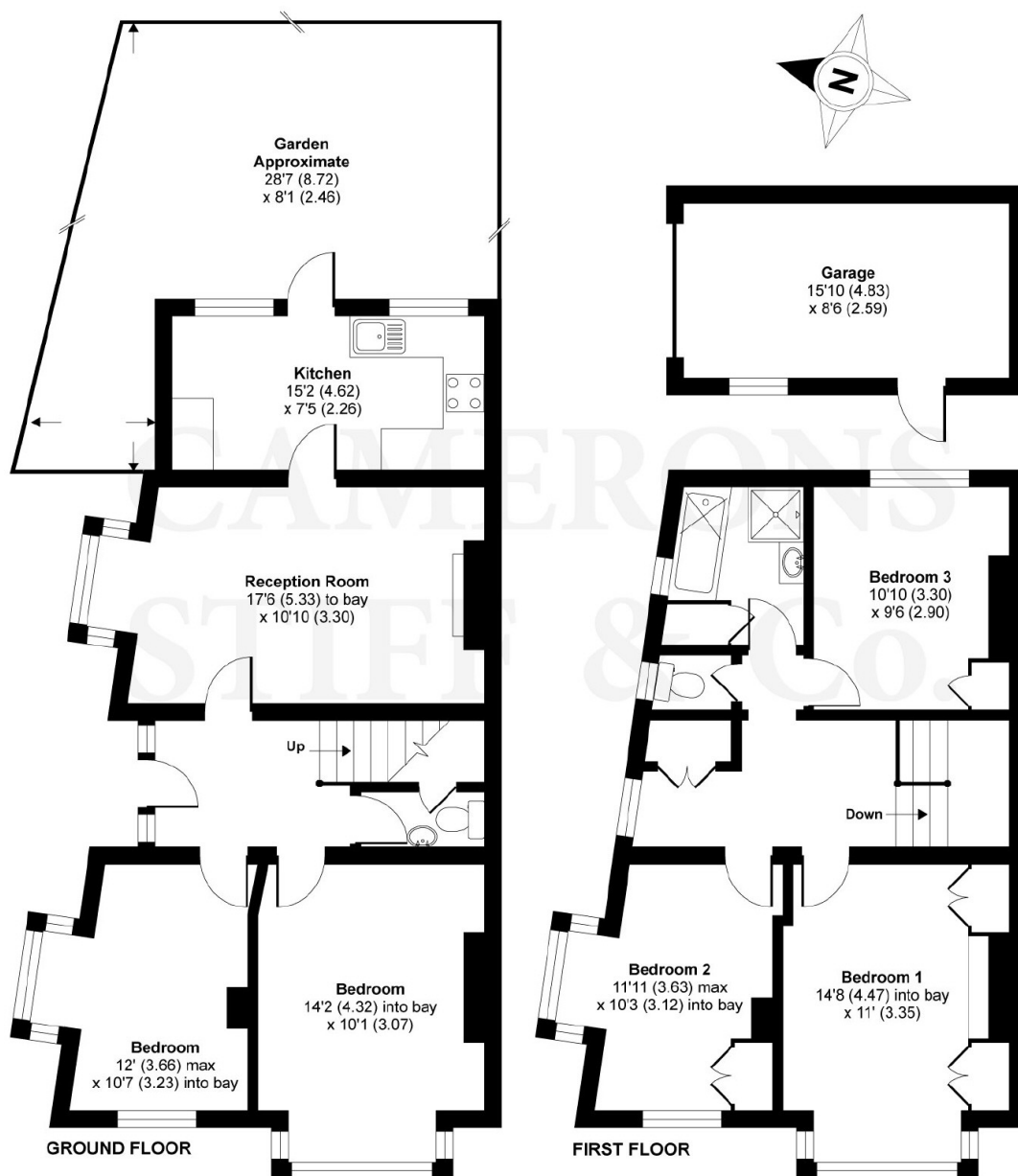
www.cameronsstiff.co.uk

You may download, store and use the material for your own personal use and research. You may not republish, retransmit, redistribute or otherwise make the material available to any party or make the same available on any website, online service or bulletin board of your own or of any other party or make the same available in hard copy or in any other media without the website owner's express prior written consent. The website owner's copyright must remain on all reproductions of material taken from this website.

Energy Efficiency Rating		
Energy efficient - lower running costs	Current	Potential
92-100 A		
81-91 B		
69-80 C		72
55-68 D	49	
45-54 E		
35-44 F		
2-34 G		
Not energy efficient - higher running costs		
England & Wales		EU Directive 2002/91/EC

Peter Avenue, London, NW10

APPROX. GROSS INTERNAL FLOOR AREA 1405 SQ FT 130.5 SQ METRES (INCLUDES GARAGE)



Whilst every attempt has been made to ensure the accuracy of the floor plan contained here, measurements of doors, windows and rooms are approximate and no responsibility is taken for any error, omission or misstatement. These plans are for representation purposes only as defined by RICS Code of Measuring Practice and should be used as such by any prospective purchaser. Specifically no guarantee is given on the total square footage of the property if quoted on this plan. Any figure given is for initial guidance only and should not be relied on as a basis of valuation.

Copyright nichecom.co.uk 2019 Produced for Camerons Stiff & Co REF : 535985

www.cameronsstiff.co.uk

275 Willesden Lane, London NW2 5JA T: 020 8459 1133 E: enquiries@cameronsstiff.co.uk

62 Salusbury Road, London, NW6 6NS T: 020 7328 2828